



Labor Planning

Create Accurate Annual Sales and Labor Budgets with Built-In Change Management

Planning is not a one-time event. It typically starts with an “annual budget.” Your annual budget offers essential planning opportunities to align all aspects of the company around shared goals for sales and expenses – with the most important expense being the cost of labor. However, that original budget often changes as weeks and months pass by.

Logile’s Labor Planning solution helps you develop better annual sales and labor budgets, monitor performance and manage the year in progress. Fine-tune results based on your budgeting and period-planning needs: from annual to seasonal or quarterly to weekly. Use each period to realign objectives, mindful of past performance and the latest reforecast to align with company financial objectives.

Key Capabilities:

- **Machine Learning Algorithms:** Utilize our superior machine learning forecasting algorithms to create an accurate sales and labor budget, complete with all the adjustments and average rate modeling needed for the upcoming year.
- **Iterative Planning Refinements:** Keep your labor model aligned with key goals, annual budgets and period plans as well as weekly forecasts and schedules to ensure you’re meeting financial objectives and store resource needs.

- **Critical Captures:** Gain the flexibility to handle events and adjustments within your business as well as events like competitor openings, and make modifications as plans or developments change.
- **Performance Tracking:** Easily track progress with the KPI dashboard, analyzing budget results and comparing to other versions or last year’s actuals down to store sub-department and weekly levels.



Create effective sales and labor budgets with all the necessary components built into one system

Keep Budgets Aligned with Operating Goals Throughout the Year

Logile's superior machine-learning forecasting algorithms enable you to create an accurate sales and labor budget, complete with all the adjustment and average rate modeling you foresee for the upcoming year. But that's just the start. Keep your operating goals aligned with those annual goals by reforecasting and replanning each period as time goes by.

Key Benefits:

At Logile, we combine retail expertise, industrial engineering and technological innovation to solve retail's toughest challenges. Our team's human intelligence, coupled with AI and machine learning technologies, sets us apart. Our unified store solutions enable retailers to seamlessly plan, schedule and execute operational strategies.

As part of Logile's Plan suite, our Labor Planning solution offers the following benefits:

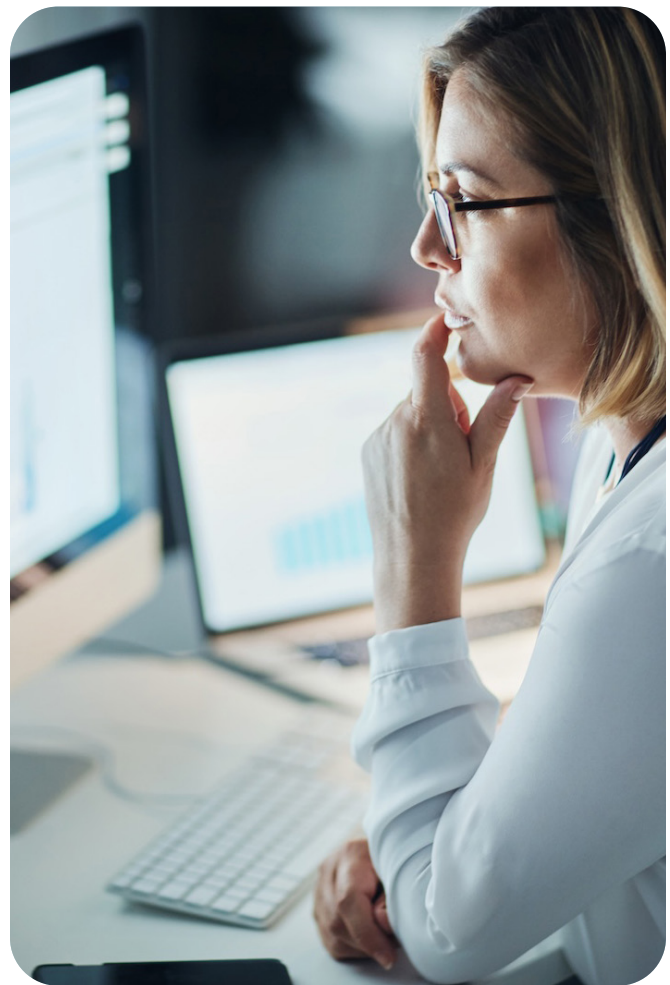
- **Build Budgets without Compromise:** Create an effective sales and labor budget with all the necessary components built into one powerful system.
- **Improve Labor Planning Accuracy:** Use store-specific data and standards to develop the most accurate forecast of sales and corresponding labor needs.
- **Substantially Reduce Planning Time:** Benefit from significant process advancements and guided workflows to manage the budget through multiple iterations or what-if scenarios.

Logile is transforming retail with cutting-edge technologies that unite stores and associates.

This helps reduce labor and inventory costs, boost associate satisfaction and enhance the overall customer experience.

Ready for a next-level customer experience?

Share your challenge with us, and let Logile provide a tailored solution to meet your needs.



Copyright© 2024 Logile. All rights reserved. The word and design marks set forth herein are trademarks and/or registered trademarks of Logile and/or related affiliates and subsidiaries. All other trademarks listed herein are the property of their respective owners. www.logile.com.